

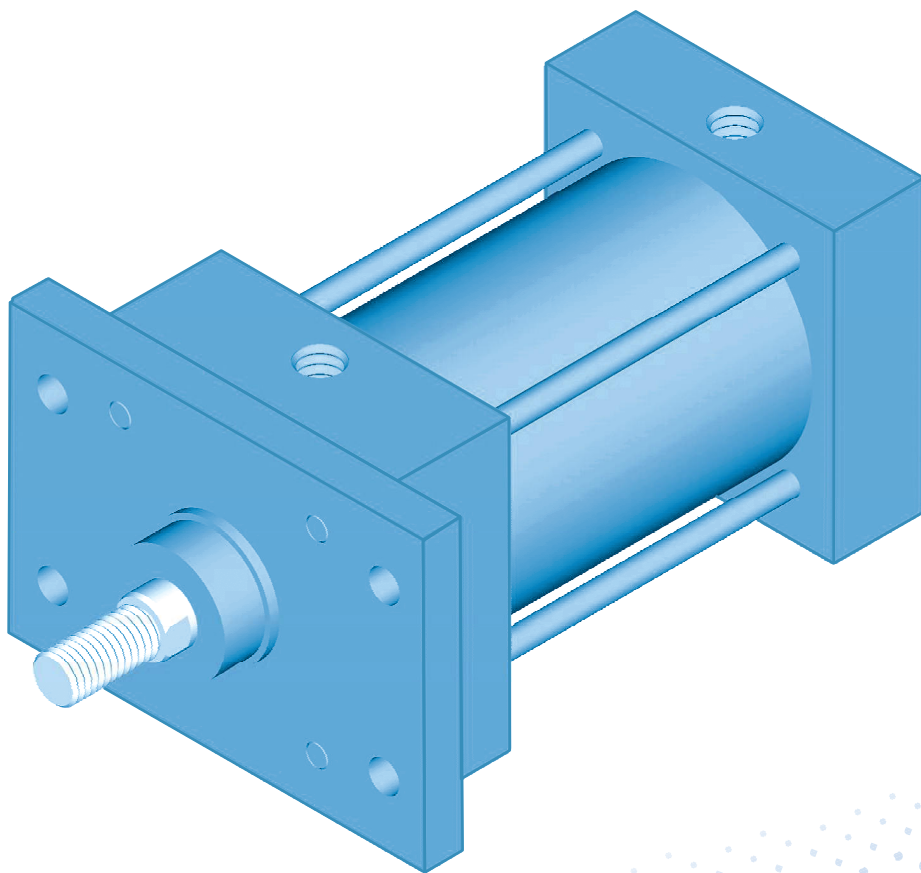


PNEUMATIC CYLINDER

ISO - 15552

10 Kg/cm²

INDIAN PNEUMATIC & HYDRAULIC COMPANY PVT. LTD.



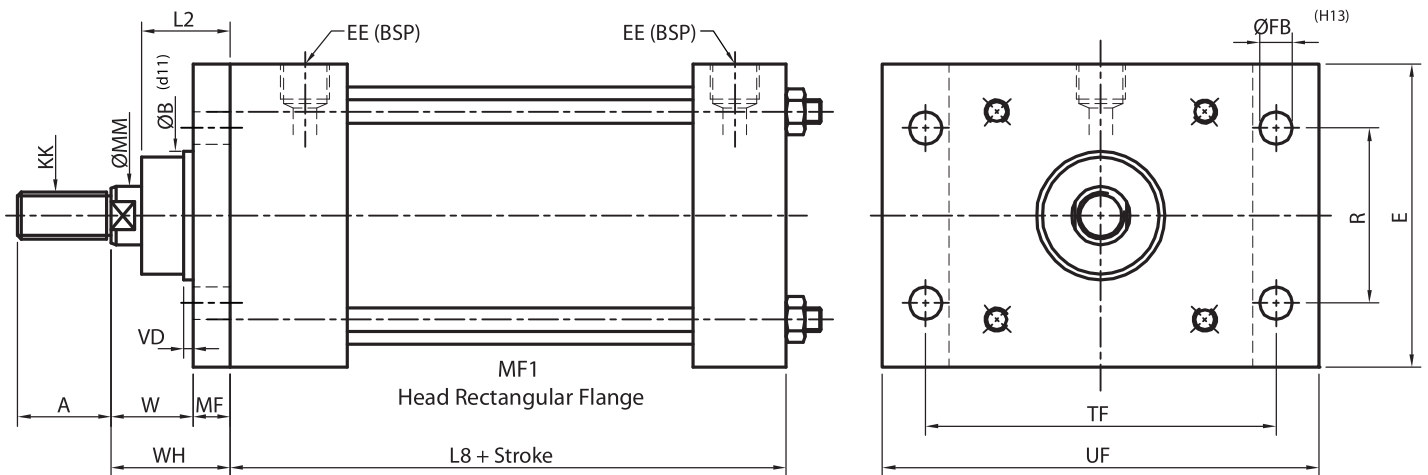
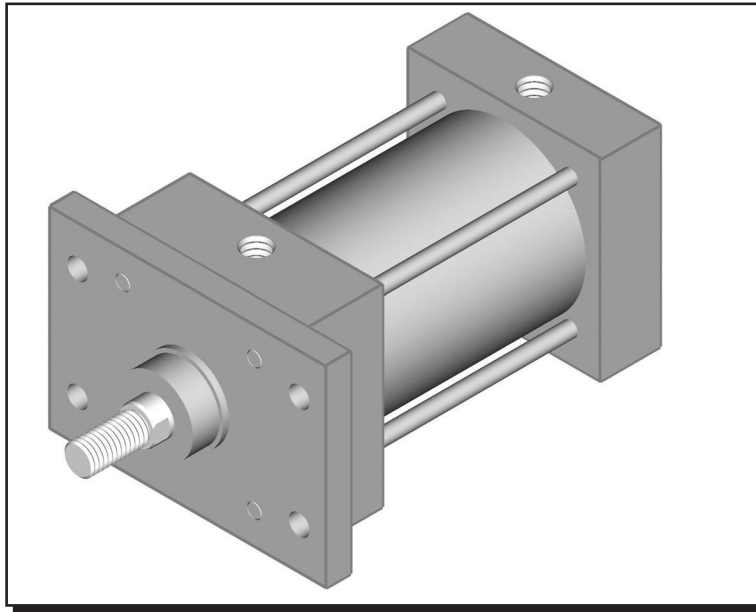
IPH PNEUMATIC CYLINDER



IPH

MF 1

ISO-15552



BORE	MM	KK	A	EE	B	L2	L8	WH	FB	E	R	MF	TF	UF	VD	W
32	12	M10x1.25	22	1/8"	30	20	94	26	7	50	32	10	64	86	4	16
40	16	M12x1.25	24	1/4"	35	22	105	30	9	58	36	10	72	96	4	20
50	20	M16x1.5	32	1/4"	40	29	106	37	9	70	45	12	90	115	4	25
63	20	M16x1.5	32	3/8"	45	29	121	37	9	85	50	12	100	130	4	25
80	25	M20x1.5	40	3/8"	45	35	128	46	12	105	63	16	126	165	4	30
100	25	M20x1.5	40	1/2"	55	38	138	51	14	130	75	16	150	187	4	35
125	32	M27x2	54	1/2"	60	50	160	65	16	157	90	20	180	224	6	45
160	40	M36x2	72	3/4"	65	60	180	80	18	195	115	20	230	280	6	60
200	40	M36x2	72	3/4"	75	70	180	95	22	238	135	25	270	320	6	70
250	50	M42x2	84	1"	90	80	200	105	26	290	165	25	330	395	10	80
320	56	M48x2	96	1"	110	90	220	120	33	353	200	30	400	475	10	90

Note:- All above dimensions are in mm.

© Indian Pneumatic & Hydraulic Company Pvt. Ltd.

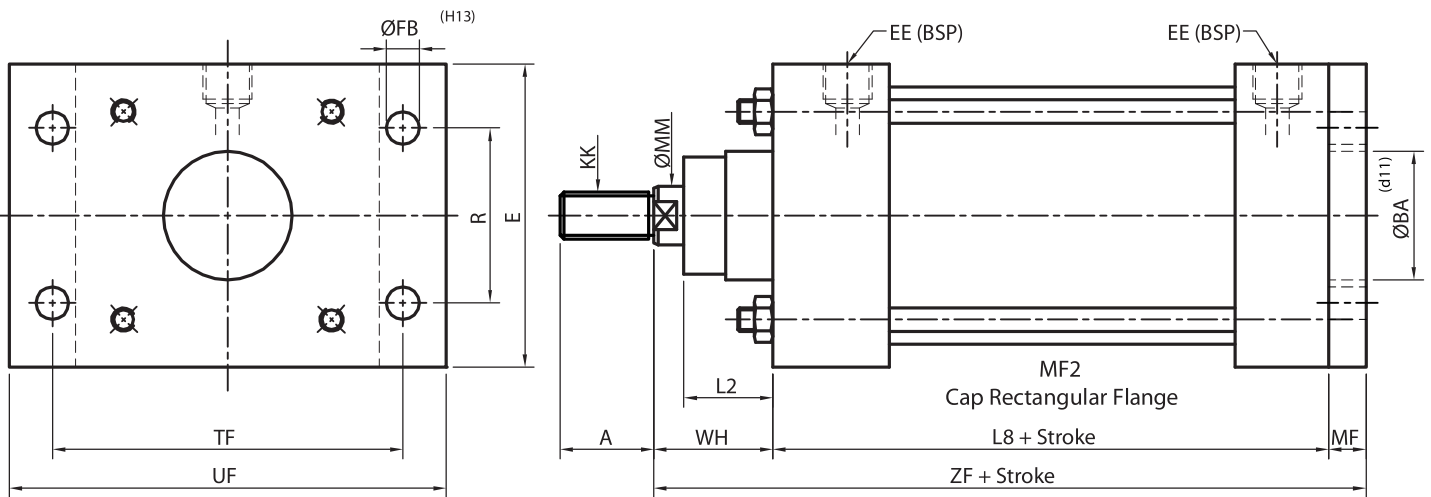
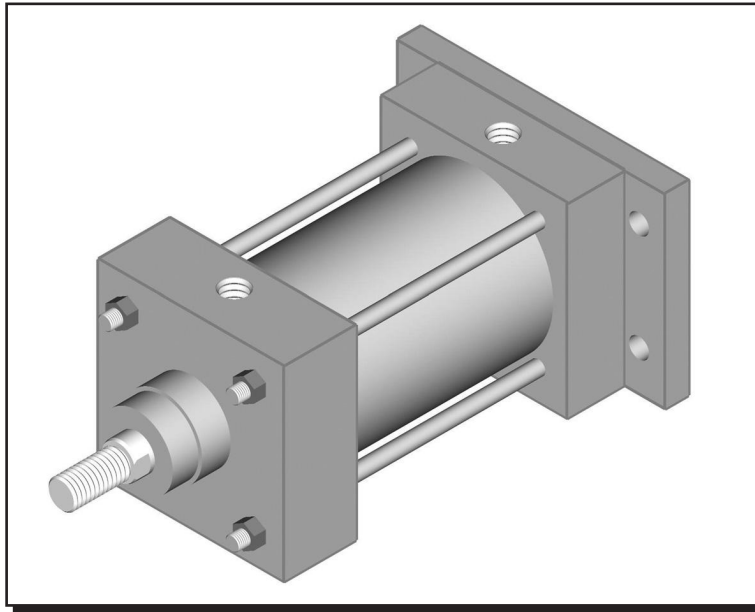
IPH PNEUMATIC CYLINDER



IPH

MF 2

ISO-15552



BORE	MM	KK	A	EE	BA	L2	L8	WH	FB	E	R	MF	TF	UF	ZF
32	12	M10x1.25	22	1/8"	30	20	94	26	7	50	32	10	64	86	130
40	16	M12x1.25	24	1/4"	35	22	105	30	9	58	36	10	72	96	145
50	20	M16x1.5	32	1/4"	40	29	106	37	9	70	45	12	90	115	155
63	20	M16x1.5	32	3/8"	45	29	121	37	9	85	50	12	100	130	170
80	25	M20x1.5	40	3/8"	45	35	128	46	12	105	63	16	126	165	190
100	25	M20x1.5	40	1/2"	55	38	138	51	14	130	75	16	150	187	205
125	32	M27x2	54	1/2"	60	50	160	65	16	157	90	20	180	224	245
160	40	M36x2	72	3/4"	65	60	180	80	18	195	115	20	230	280	280
200	40	M36x2	72	3/4"	75	70	180	95	22	238	135	25	270	320	300
250	50	M42x2	84	1"	90	80	200	105	26	290	165	25	330	395	330
320	56	M48x2	96	1"	110	90	220	120	33	353	200	30	400	475	370

Note:- All above dimensions are in mm.

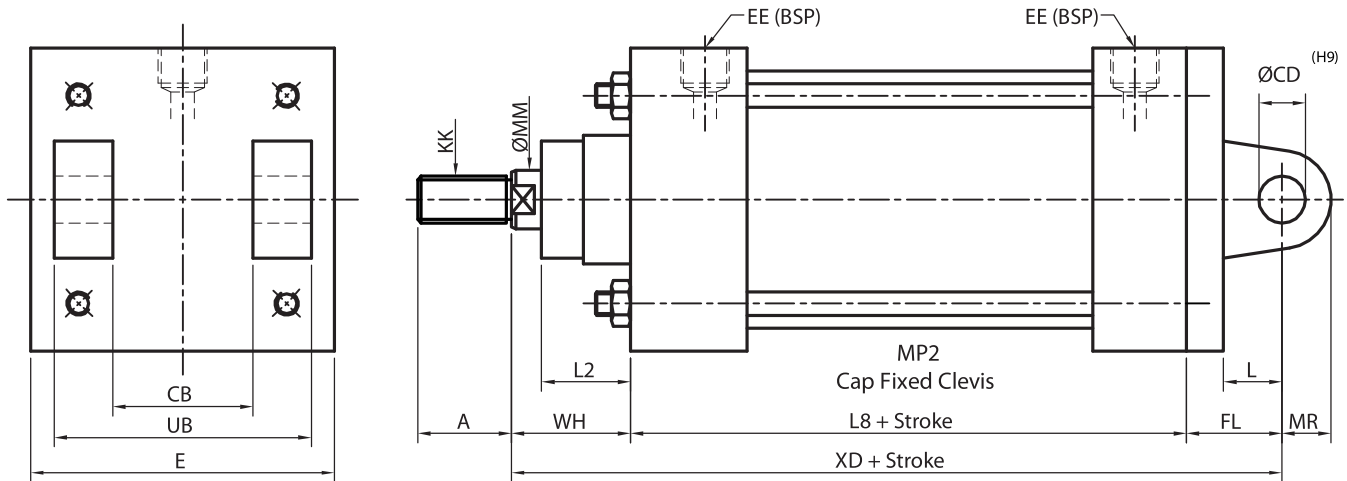
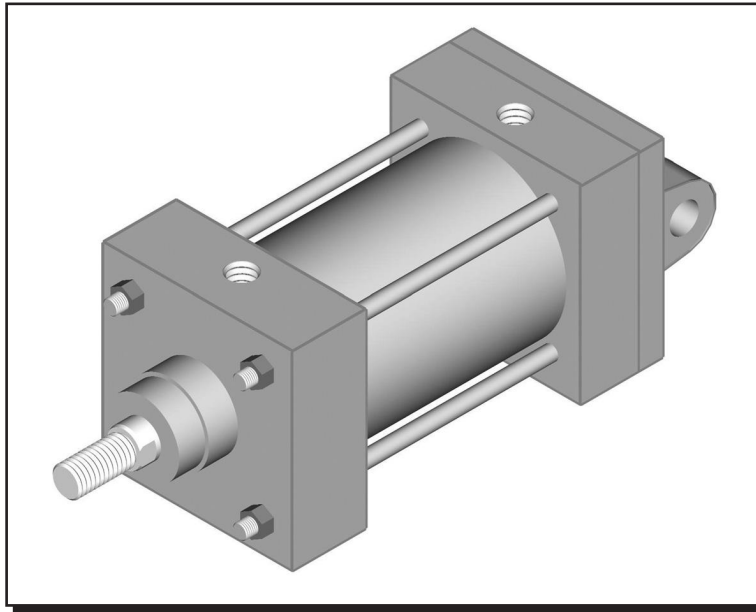
© Indian Pneumatic & Hydraulic Company Pvt. Ltd.

IPH PNEUMATIC CYLINDER



MP 2

ISO-15552



BORE	MM	KK	A	EE	FL	L2	L8	WH	L	E	UB	CB	CD	MR	XD
32	12	M10x1.25	22	1/8"	22	20	94	26	12	50	45	26	10	11	142
40	16	M12x1.25	24	1/4"	25	22	105	30	15	58	52	28	12	13	160
50	20	M16x1.5	32	1/4"	27	29	106	37	15	70	60	32	12	13	170
63	20	M16x1.5	32	3/8"	32	29	121	37	20	85	70	40	16	17	190
80	25	M20x1.5	40	3/8"	36	35	128	46	20	105	90	50	16	17	210
100	25	M20x1.5	40	1/2"	41	38	138	51	25	130	110	60	20	21	230
125	32	M27x2	54	1/2"	50	50	160	65	30	157	130	70	25	26	275
160	40	M36x2	72	3/4"	55	60	180	80	35	195	170	90	30	31	315
200	40	M36x2	72	3/4"	60	70	180	95	35	238	170	90	30	31	335
250	50	M42x2	84	1"	70	80	200	105	45	290	200	110	40	41	375
320	56	M48x2	96	1"	80	90	220	120	50	353	220	120	45	46	420

Note:- All above dimensions are in mm.

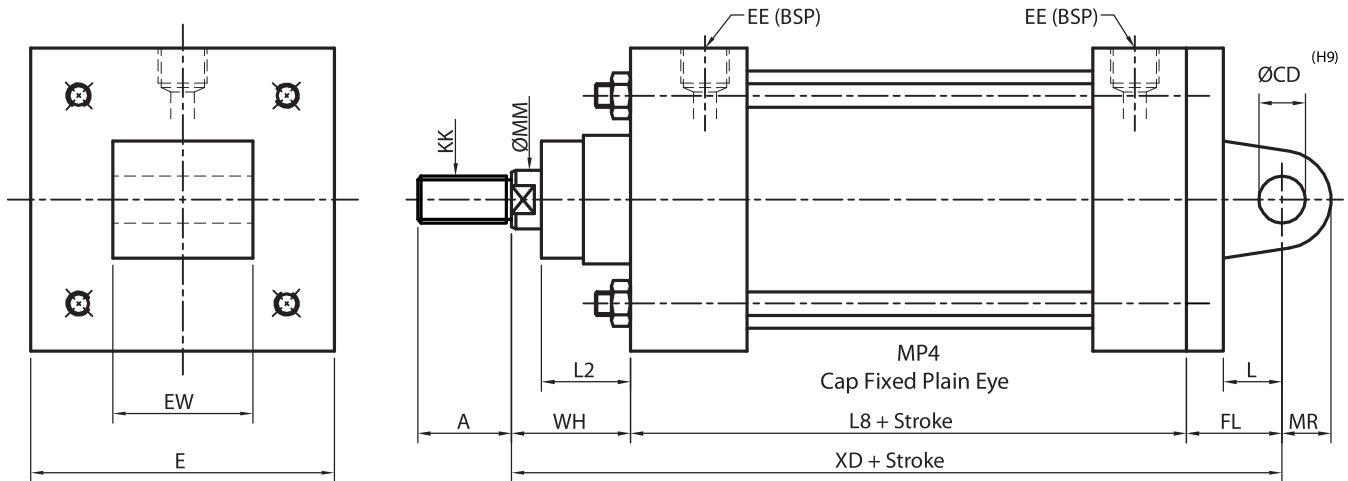
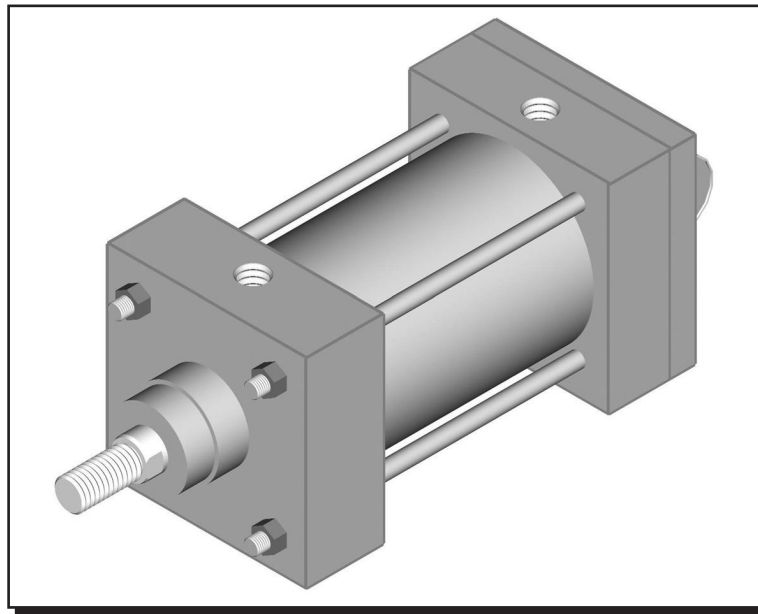
© Indian Pneumatic & Hydraulic Company Pvt. Ltd.

IPH PNEUMATIC CYLINDER



IPH
MP 4

ISO-15552



BORE	MM	KK	A	EE	FL	L2	L8	WH	L	E	EW	CD	MR	XD
32	12	M10x1.25	22	1/8"	22	20	94	26	12	50	26	10	11	142
40	16	M12x1.25	24	1/4"	25	22	105	30	15	58	28	12	13	160
50	20	M16x1.5	32	1/4"	27	29	106	37	15	70	32	12	13	170
63	20	M16x1.5	32	3/8"	32	29	121	37	20	85	40	16	17	190
80	25	M20x1.5	40	3/8"	36	35	128	46	20	105	50	16	17	210
100	25	M20x1.5	40	1/2"	41	38	138	51	25	130	60	20	21	230
125	32	M27x2	54	1/2"	50	50	160	65	30	157	70	25	26	275
160	40	M36x2	72	3/4"	55	60	180	80	35	195	90	30	31	315
200	40	M36x2	72	3/4"	60	70	180	95	35	238	90	30	31	335
250	50	M42x2	84	1"	70	80	200	105	45	290	110	40	41	375
320	56	M48x2	96	1"	80	90	220	120	50	353	120	45	46	420

Note:- All above dimensions are in mm.

© Indian Pneumatic & Hydraulic Company Pvt. Ltd.

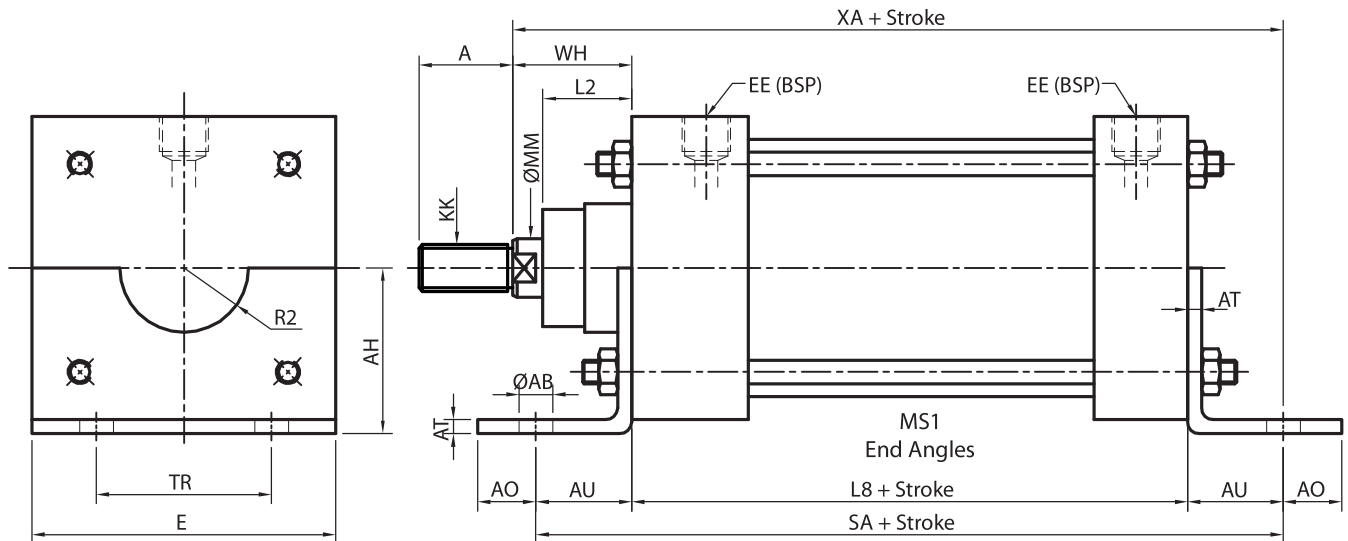
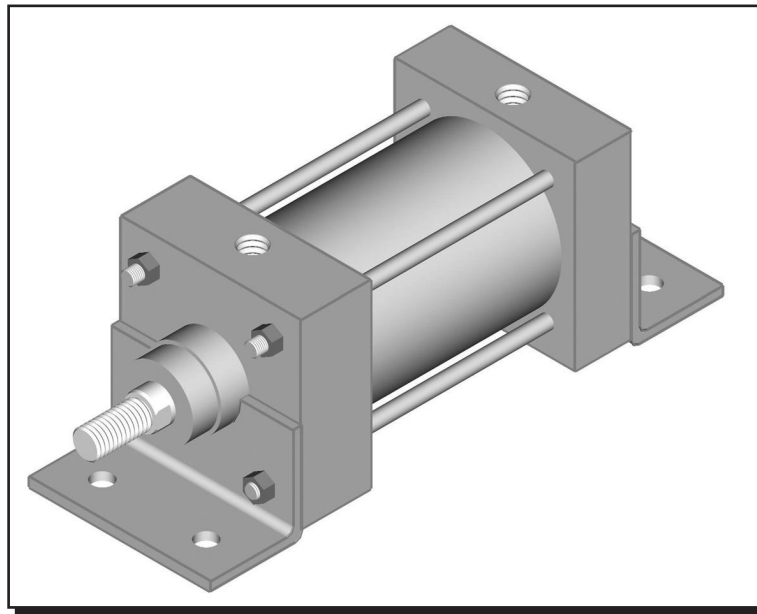
IPH PNEUMATIC CYLINDER



IPH

MS 1

ISO-15552



BORE	MM	KK	A	EE	AH	L2	L8	WH	R2	E	SA	XA	AU	AO	AB	AT	TR
32	12	M10x1.25	22	1/8"	32	20	94	26	15	50	142	144	24	11	7	4	32
40	16	M12x1.25	24	1/4"	36	22	105	30	17.5	58	161	163	28	15	10	4	36
50	20	M16x1.5	32	1/4"	45	29	106	37	20	70	170	175	32	15	10	5	45
63	20	M16x1.5	32	3/8"	50	29	121	37	22.5	85	185	190	32	15	10	5	50
80	25	M20x1.5	40	3/8"	63	35	128	46	22.5	105	210	215	41	20	12	6	63
100	25	M20x1.5	40	1/2"	71	38	138	51	27.5	130	220	230	41	25	14.5	6	75
125	32	M27x2	54	1/2"	90	50	160	65	30	157	250	270	45	25	16.5	8	90
160	40	M36x2	72	3/4"	115	60	180	80	32.5	195	300	320	60	25	18.5	10	115
200	40	M36x2	72	3/4"	135	70	180	95	37.5	238	320	345	70	35	24	12	135
250	50	M42x2	84	1"	165	80	200	105	45	290	350	380	75	40	28	20	165
320	56	M48x2	96	1"	200	90	220	120	55	353	390	425	85	45	35	23	200

Note:- All above dimensions are in mm.

© Indian Pneumatic & Hydraulic Company Pvt. Ltd.

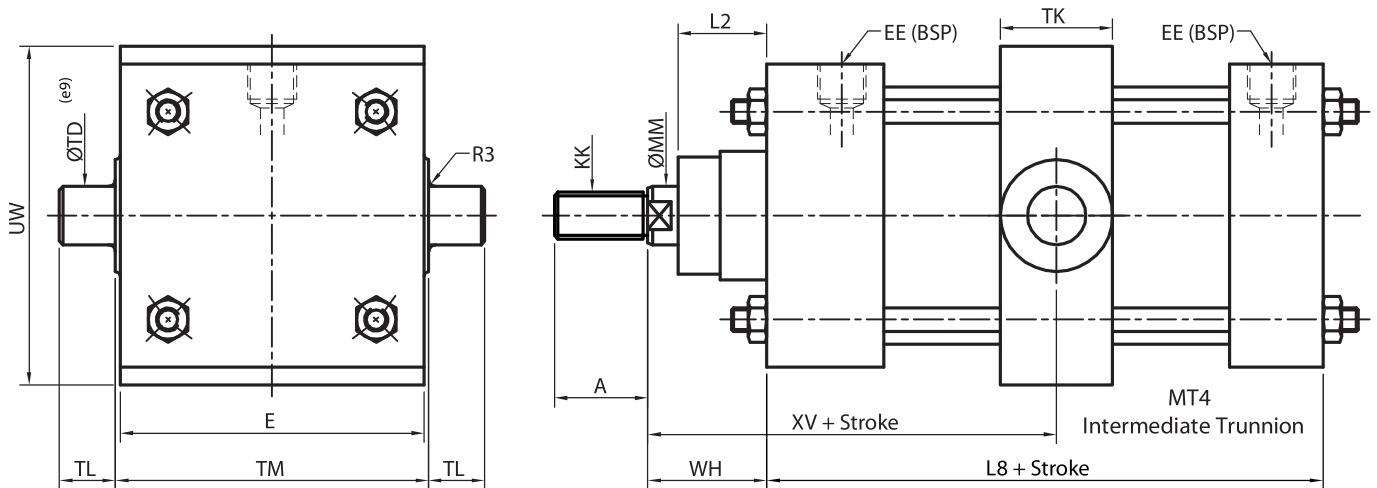
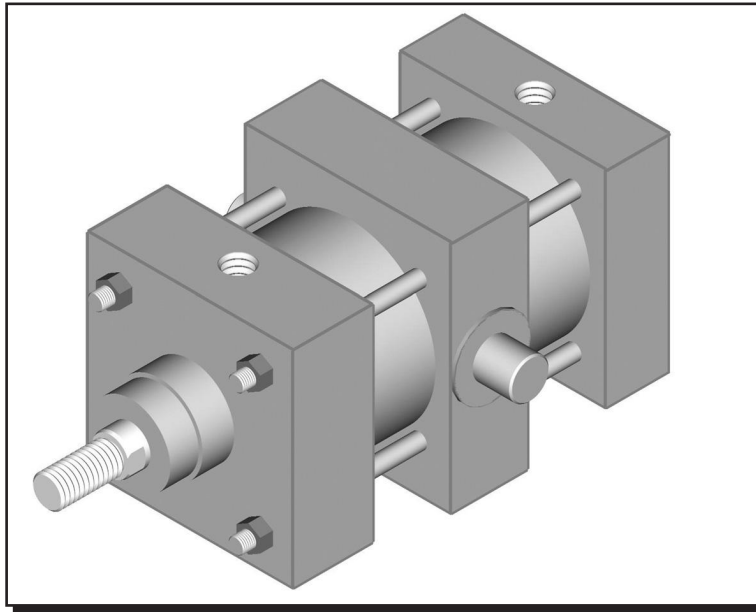
IPH PNEUMATIC CYLINDER



IPH

MT 4

ISO-15552



BORE	MM	KK	A	EE	R3	L2	L8	WH	XV	E	TM	TL	TD	UW	TK
32	12	M10x1.25	22	1/8"	1	20	94	26	Party Specify	50	50	12	12	65	25
40	16	M12x1.25	24	1/4"	1.6	22	105	30		58	63	16	16	75	28
50	20	M16x1.5	32	1/4"	1.6	29	106	37		70	75	16	16	95	28
63	20	M16x1.5	32	3/8"	1.6	29	121	37		85	90	20	20	105	36
80	25	M20x1.5	40	3/8"	1.6	35	128	46		105	110	20	20	130	36
100	25	M20x1.5	40	1/2"	2	38	138	51		130	132	25	25	145	48
125	32	M27x2	54	1/2"	2	50	160	65		157	160	25	25	175	50
160	40	M36x2	72	3/4"	2.5	60	180	80		195	200	32	32	220	50
200	40	M36x2	72	3/4"	2.5	70	180	95		238	250	32	32	260	50
250	50	M42x2	84	1"	3.2	80	200	105		290	320	40	40	320	60
320	56	M48x2	96	1"	3.2	90	220	120		353	400	50	50	400	70

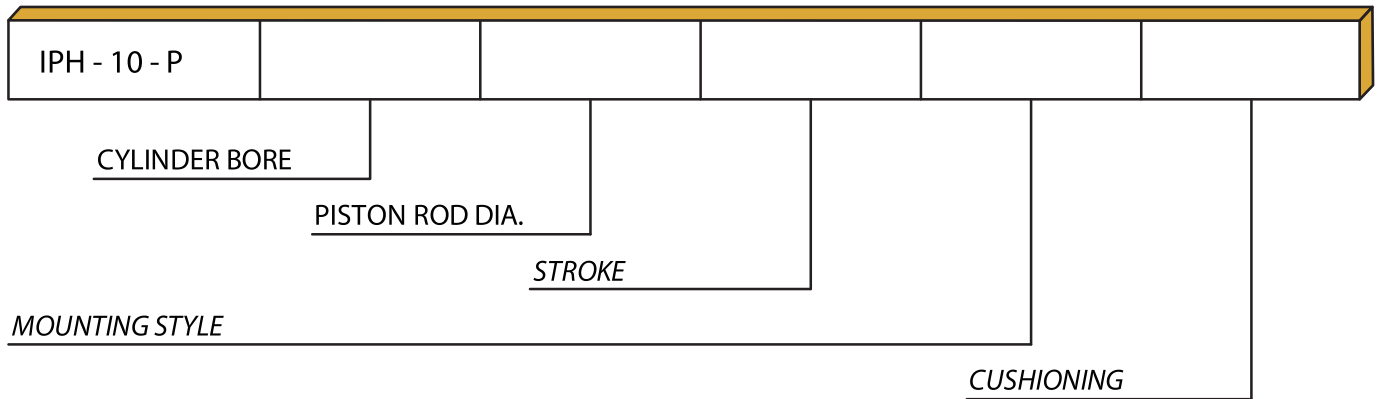
Note:- All above dimensions are in mm.

© Indian Pneumatic & Hydraulic Company Pvt. Ltd.

ORDERING DETAILS

Pneumatic Cylinders, rated for Operating Pressure of upto 10 Kg/cm²
Tie Rod Construction
As per ISO 15552

Please use the following format when Ordering :



MF 1 = Head Rectangular Flange
MF 2 = Cap Rectangular Flange
MP 2 = Cap Fixed Clevis
MP 4 = Cap Fixed Plain Eye
MS 1 = End Angles
MT 4 = Intermediate Trunnion

CB = Cushioning at Both Ends
NC = Non Cushioned
CC = Cap End Cushioned
CH = Head End Cushioned

Example: For Hydraulic Cylinder with Bore 100 mm, Piston Rod dia 25 mm, Stroke 500 mm
Mounting Head Rectangular Flange, and Cushioned at both ends will be specified as
IPH - 10 - P / 100 / 25 / 500 / MF1 / CB

Reference number ISO 15552 : 2004



www.iphindia.in

INDIAN PNEUMATIC & HYDRAULIC COMPANY PVT. LTD.

For enquiries : mail us at sales@iphindia.in